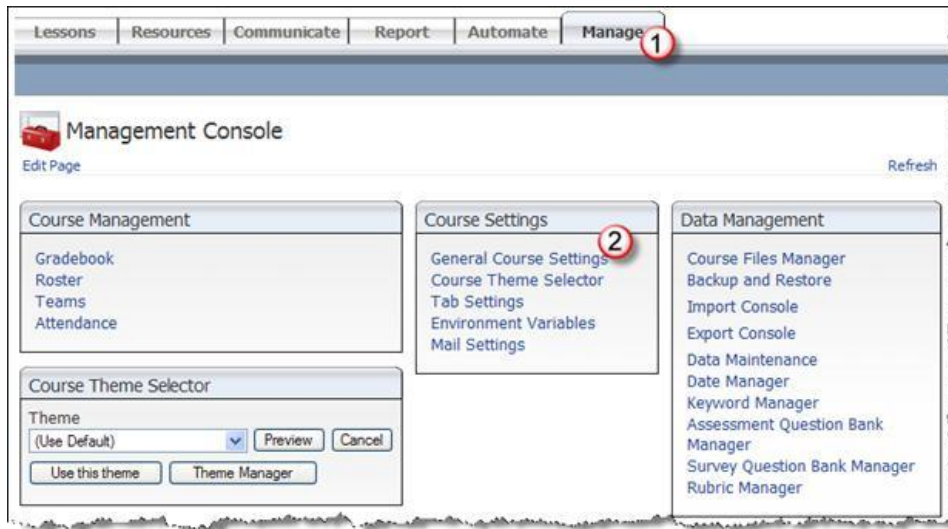


Enabling and Disabling ANGEL Courses

From the ANGEL 7.4 Instructors Reference Guide

Your course can be enabled or disabled at any time. The Course Access field is located within your course's General Course Settings. To change these settings, enter your course by clicking the course title's hyperlink in the Courses component on the ANGEL Home page.



To edit the General Course Settings within your course:

1. **Manage tab.** Once inside your course, click the **Manage** tab at the top of the screen.
2. **General Course Settings.** Click the **General Course Settings** hyperlink within the Course Settings component.

The following figure displays the Course Settings Access options.



To edit course access:

1. Click the **Access** tab on the Course Settings page.

2. In the **Member Access** field, select the appropriate option:

a. **Editors Only.** With this setting, students do not have access to course materials; only those listed with editors' rights on the course roster have access.

b. **All Members.** With this setting, the course is open to all members listed on the course roster.



Note: The **Editors Only** setting for **Member Access** signifies that only course editors can access the course. This is what designates the course as disabled. Changing the setting to **All Members** makes the course visible on the Home page of anyone enrolled in the course.

3. Select **None** for **Guest Access** if you want only people listed on the roster to view this course. Set **Search Engines** to **No** if you do not want this course to display in a Find a Course search. (Both of these settings restrict access to this course.) If you set **Guest Access** to **Authenticated** or **Anonymous**, it could allow others into the course. They would be able to view any content item not set to be viewed by **Students Only**, and they would be able to find the course via a Find a Course search (if that option was set to **Yes**) or via a direct URL link to the course.



Tip: Reverse this procedure to prevent students from accessing the course after the course is over.