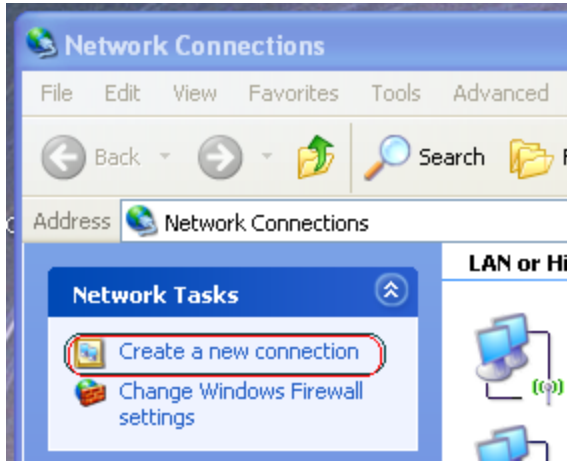


To set up your VPN client, do the following:

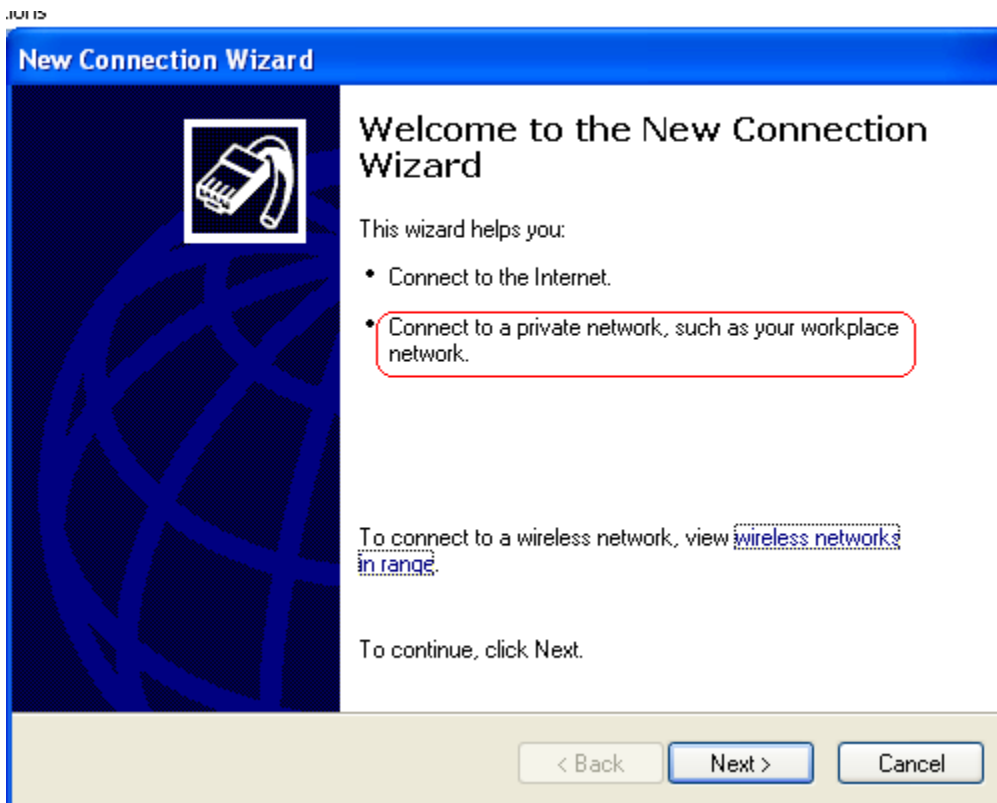
Go to the control panel.

Open Network Connections.

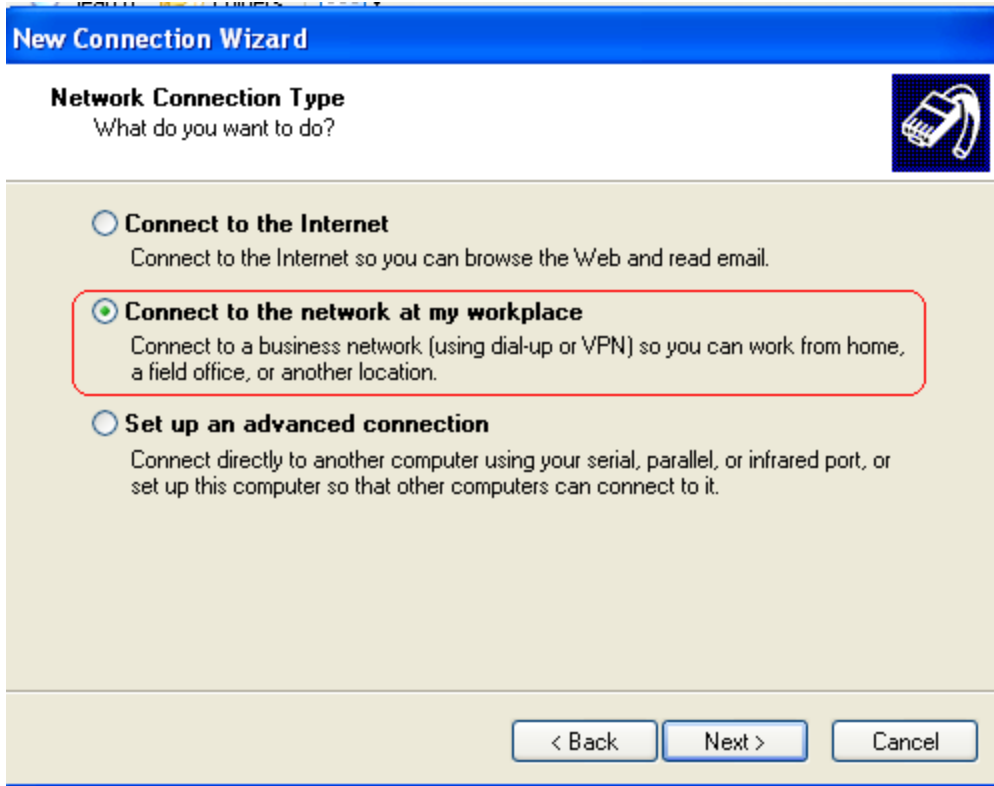
Click on "Create a new connection." Click next.



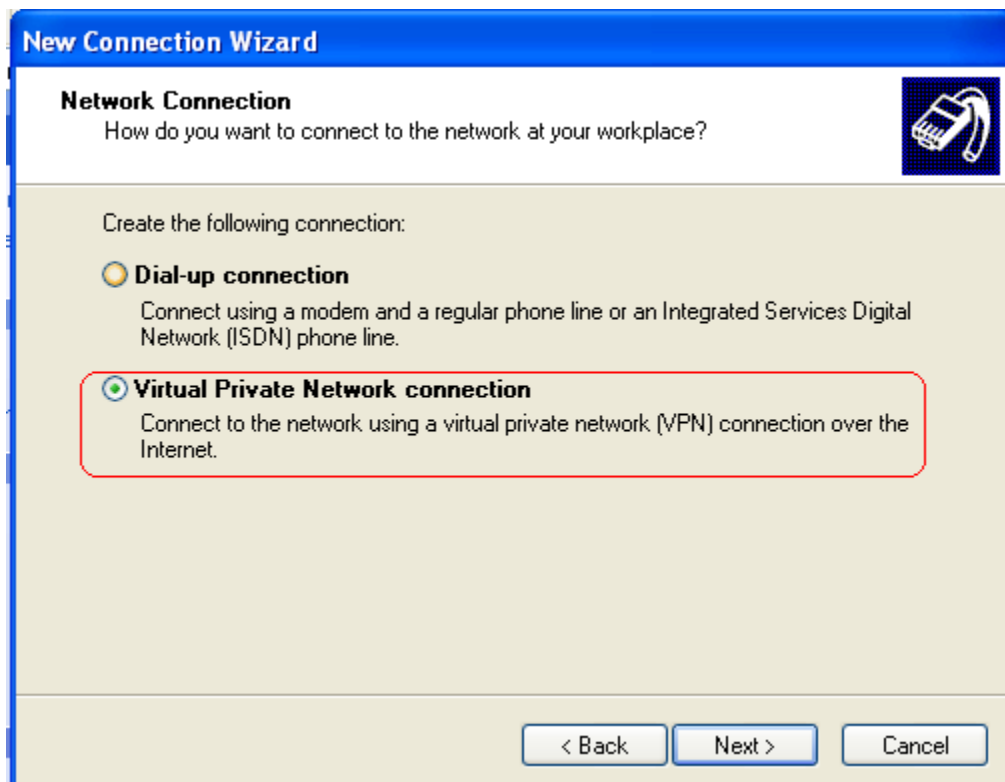
Choose "Connect to a private network" and click next.



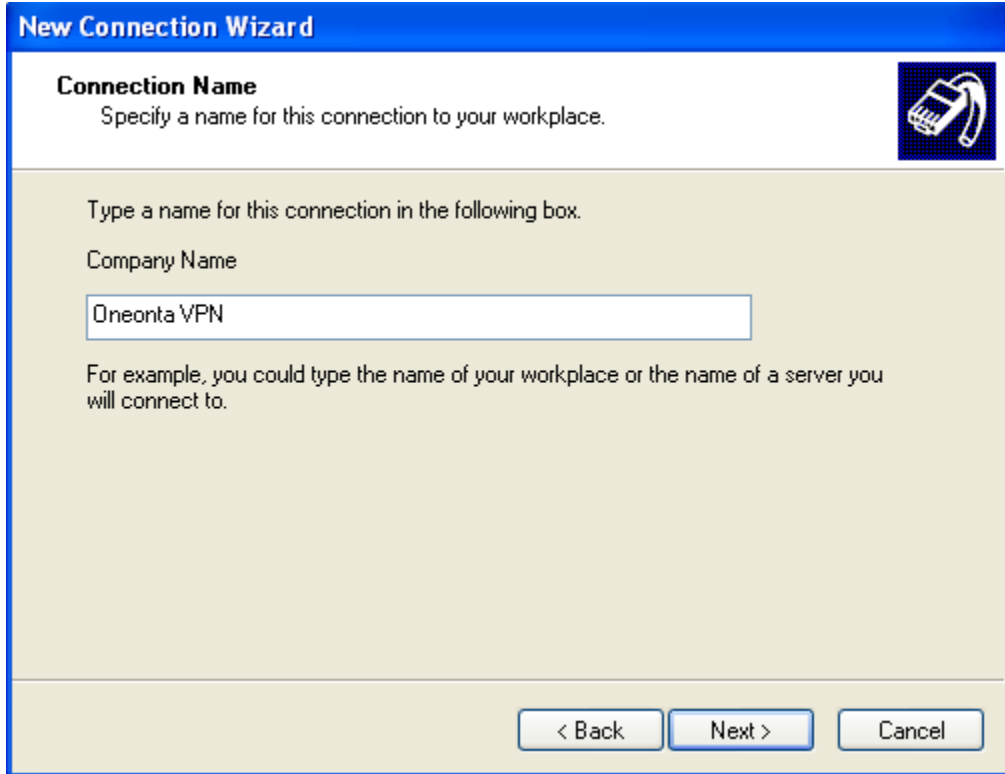
Select "Connect to the network at my workplace" and click next.



Select "Virtual Private Network" and click next.



Enter the name Oneonta VPN and click next.



**New Connection Wizard**

**Connection Name**  
Specify a name for this connection to your workplace.

Type a name for this connection in the following box.

Company Name

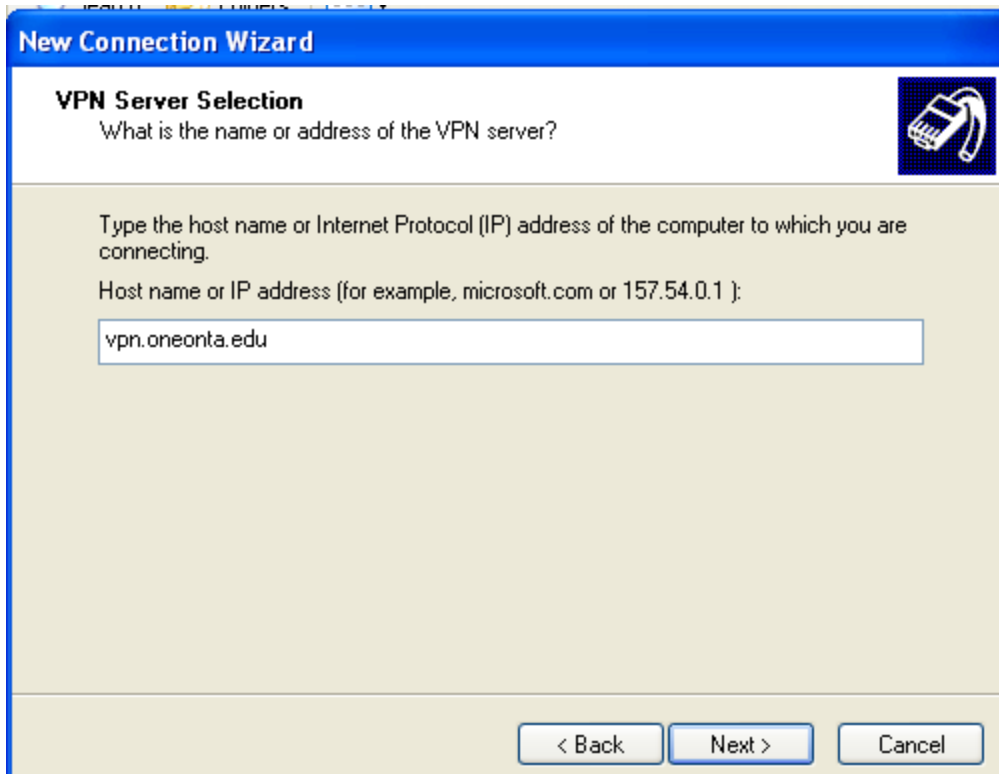
Oneonta VPN

For example, you could type the name of your workplace or the name of a server you will connect to.

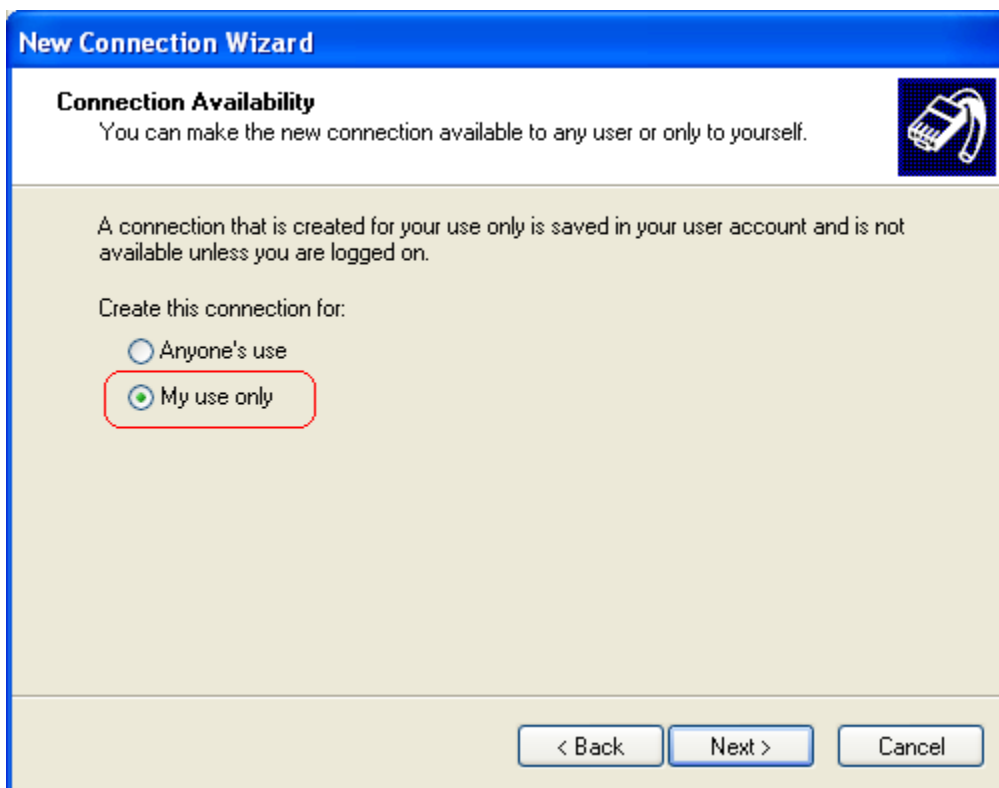
< Back   Next >   Cancel

If displayed, choose "Do not dial the initial connection" and next.

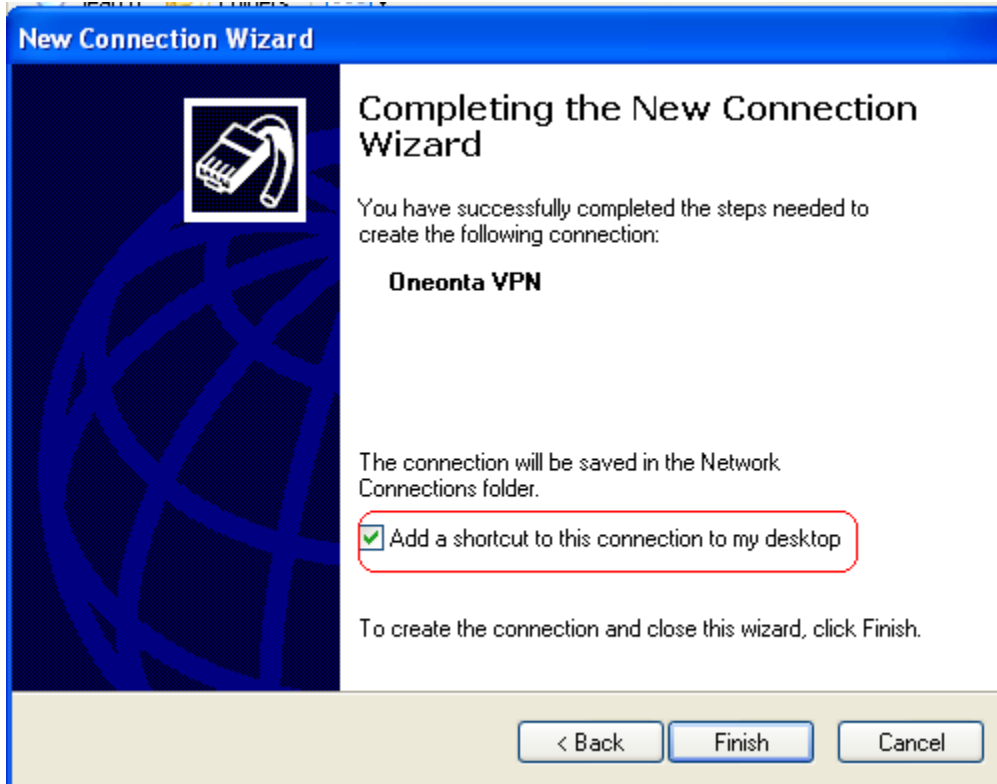
Enter "**vpn.oneonta.edu**" and next.



Choose "My use only" and next.



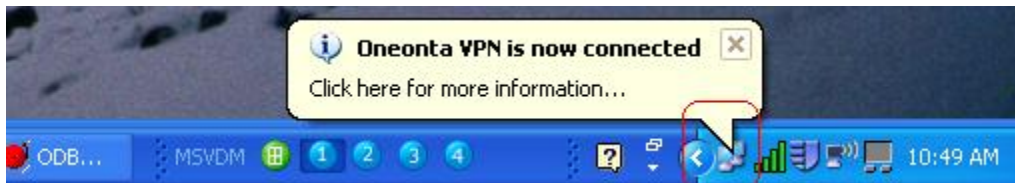
Select to add a shortcut, if you like and click "finish."



You should now be able to click the desktop shortcut or go back into the network connections through the control panel and click the connection you just created. It will open a dialog box and you can enter your usercode and your Oneonta e-mail password. Please do not allow it save your password.



When connected, there will be an icon in your system tray:



You can right-click the icon to disconnect:

