

## ◆ Program Goals ◆

The Bugbee Children's Center provides care for infants (8 weeks to 18 months), toddlers (18 months to 3 years), and preschool children (3 to 5 years). Children attending elementary school during the day may enroll in the school-age program for holidays and vacations. The goal for the Center is to provide a safe, healthy, caring and stimulating environment for children. This environment is designed to meet the children's developmental needs by being emotionally nurturing, physically safe, and cognitively challenging. In addition, the Center serves parents by providing a support service which allows parents to work or attend college with the confidence that their children will be in a safe, caring, learning environment.

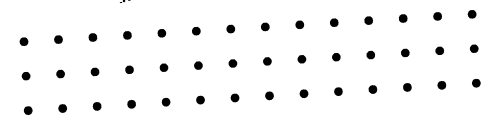
A program of daily activities for preschoolers and toddlers includes individual and group time, free choice and structured activities as well as quiet and active periods. The classroom environment is divided into areas offering creative art and music activities, dramatic play, books, cognitive games, and puzzles and other fine motor activities. Large indoor areas and age appropriate outdoor playgrounds provide opportunities for climbing, running, tricycling and other large motor activities. The emphasis for infants is on a nurturing, warm, caring, home-like environment. There is a balance of both new and familiar experiences to serve as stimuli for learning through play and exploration. Opportunities to experience the world are available through both indoor and outdoor activities. Care of infants is individualized to provide a consistency between home and the Center.

The Center provides breakfast, lunch and an afternoon snack for older infants, toddlers, preschoolers and school age children. Meals are prepared on the premises according to the Child and Adult Care Food Program guidelines and are served to the children "family style." With the consent of parents for infants (8 weeks to one year of age) food and milk/formula can be provided by the Center.



### Our Mission

Because we love and respect children, the Bugbee Children's Center encourages and supports a child's development and growth by creating early childhood environments that foster friendships, self-esteem and joy. We work with families to provide the stability, freedom, and understanding that allow a child to grow



Bugbee Children's Center  
Bugbee Hall, State Street  
Oneonta, NY 13820

Phone: 607-436-2484  
Fax: 607-436-2664  
Email: [childcenter@oneonta.edu](mailto:childcenter@oneonta.edu)



The United Way helps here!

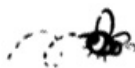
*Discover the Bugbee Advantage!*

## ► Maintaining a legacy of nurturing and care

The Bugbee Children's Center (previously known as The SUCO Children's Center) offers year around child care services for children of the State University College at Oneonta students, other SUNY students, SUNY and State employees, and members of the community as space permits. The Center is located in Bugbee Hall on State Street. The Bugbee Children's Center is a private, non-profit corporation. A volunteer Board of Directors acts as the governing body. The Center provides child care for infants, toddlers, and preschool children ranging from eight weeks to five years of age. A program for school age children is available on school holidays and during vacations and summers.

### History

The Bugbee Children's Center of today grew from the concerns of an interest group formed in 1984. Initial surveys confirmed that the entire college community recognized the need for quality child care and a willingness to support efforts to establish such a center. A small volunteer group of faculty, staff, and students prepared a proposal and funding was approved for the establishment of the Center. The center opened on May 28, 1985.



### Hours

The Center operates between the hours of 7:00am and 5:30pm Monday through Friday. Both full-time and part-time care is offered during these times. The Center is typically closed on the following days: Memorial Day, Independence Day, Thanksgiving Day and the Day after, and typically Christmas week subject to Board approval.

### Tuition and Scheduling

A sliding fee scale has been developed for all families to access. The fee schedule reflects family income and level of care needed.

Options for care include full-time (4 or 5 days per week, over 5 hours per day), full days (over 5 hours per day), or part days (maximum 5 hours, 7:30am - 12:30pm, up to 5 days per week).

The minimum enrollment is two part days per week. Fees are determined by which schedule is chosen.



"This is an Equal Opportunity Program. Discrimination is prohibited by Federal law. Complaints of discrimination may be filed with USDA, Director, Office of Civil Rights, Room 326-W, Whitten Building, 1400 Independence Ave. SW, Washington DC 20250-9410 or call (202)720-5964 (voice and TDD)"



*Proudly serving our community since 1985*

Bugbee Children's Center  
Bugbee Hall, State Street  
Oneonta, NY 13820

Phone: 607-436-2484  
Fax: 607-436-2664  
Email: [childcenter@oneonta.edu](mailto:childcenter@oneonta.edu)

<http://www.oneonta.edu/development/childcenter>

Director: Marie Petta

