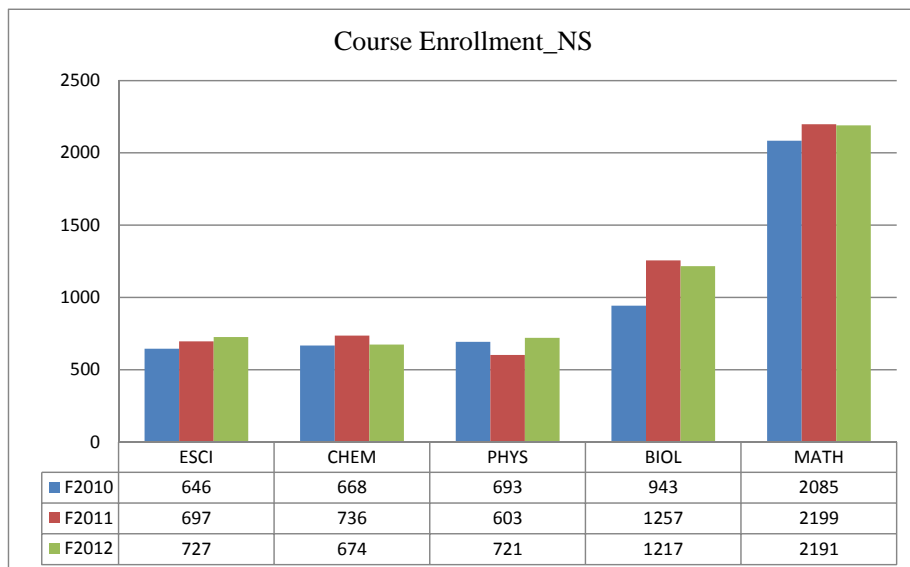


School of Natural and Mathematical Sciences

Dept	Fall 2010				Fall 2011				Fall 2012			
	Enrolled	# of Courses	SCH	FTE	Enrolled	# of Course	SCH	FTE	Enrolled	Course	SCH	FTE
BIOL	943	67	3261	218	1257	89	4162	279	1217	92	4084	275
CHEM	668	44	2518	168	736	51	2688	179	674	42	2562	171
ESCI	646	42	1937	130	697	44	2143	143	727	43	2218	148
MATH	2085	105	6653	444	2199	108	7061	471	2191	104	6977	465
PHYS	693	25	2238	149	603	22	1925	128	721	24	2319	155
TOTAL	5035	283	16607	1109	5492	314	17979	1200	5530	305	18160	1214

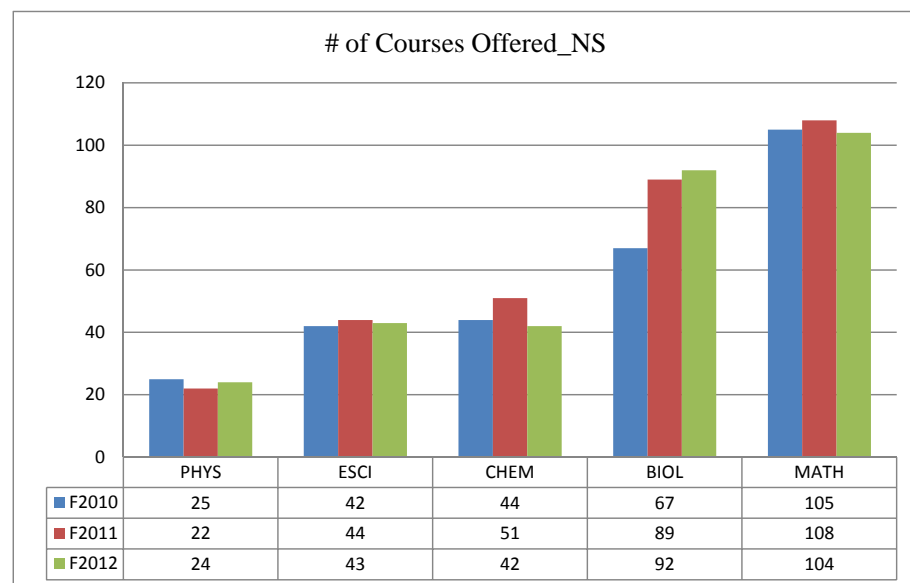
Course Enrollment_NS

Dept	F2010	F2011	F2012
ESCI	646	697	727
CHEM	668	736	674
PHYS	693	603	721
BIOL	943	1257	1217
MATH	2085	2199	2191
TOTAL	5035	5492	5530



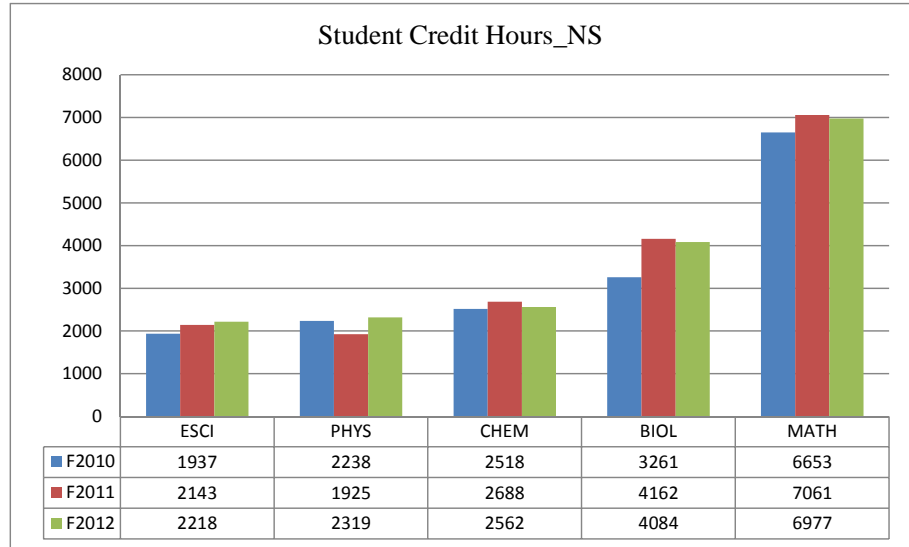
of Courses Offered_NS

Dept	F2010	F2011	F2012
PHYS	25	22	24
ESCI	42	44	43
CHEM	44	51	42
BIOL	67	89	92
MATH	105	108	104
TOTAL	283	314	305



Student Credit Hours_NS

Dept	F2010	F2011	F2012
ESCI	1937	2143	2218
PHYS	2238	1925	2319
CHEM	2518	2688	2562
BIOL	3261	4162	4084
MATH	6653	7061	6977
TOTAL	16607	17979	18160



FTE_NS

Dept	F2010	F2011	F2012
ESCI	130	143	148
PHYS	149	128	155
CHEM	168	179	171
BIOL	218	279	275
MATH	444	471	465
TOTAL	1109	1200	1214

