

History of ice on/ice off dates for Otsego Lake, NY

Matt Altman¹

The following data were collected and compiled by Pack and Kollis (1973), Harman et al. (1980), Harman et al. (1997) and Harman (pers. comm.) and are summarized in Figure 1.

Winter of	Closed	Opened	# days closed	Winter of	Closed	Opened	# days closed
1842-43		4/26/1843		1884-85	1/19/1885	4/26/1885	97
1843-44		4/13/1844		1885-86	1/11/1886	4/13/1886	92
1844-45		4/1/1845		1886-87	1/2/1887	5/1/1887	119
1845-46		4/7/1846		1887-88	12/30/1887	4/30/1888	122
1846-47		4/25/1847		1888-89	1/19/1889	4/11/1889	82
1847-48		4/10/1848		1889-90	2/22/1890	4/8/1890	45
1848-49		4/7/1849		1890-91	12/25/1890	4/15/1891	111
1849-50	2/1/1849	4/24/1850	83	1891-92	1/20/1892	4/5/1892	76
1850-51	12/30/1850	3/30/1851	90	1892-93	12/28/1892	4/18/1893	111
1851-52	12/24/1851	4/26/1852	124	1893-94	1/13/1894	3/22/1894	63
1852-53	1/17/1853	4/9/1853	82	1894-95	12/29/1894	4/20/1895	112
1853-54	1/24/1854	4/20/1854	86	1895-96	1/6/1896	4/20/1896	91
1854-55	12/20/1854	4/24/1855	125	1896-97	1/18/1897	4/21/1897	92
1855-56	1/5/1856	4/26/1856	112	1897-98	1/28/1898	3/18/1898	44
1856-57	12/18/1856	4/6/1857	109	1898-99	1/10/1899	4/24/1899	104
1857-58	2/5/1858	4/5/1858	59	1899-00	1/9/1900	4/19/1900	101
1858-59	1/9/1859	3/30/1859	89	1900-1901	1/19/1901	4/17/1901	88
1859-60	12/28/1859	4/7/1860	101	1901-02	1/17/1902	3/29/1902	71
1860-61	1/8/1861	4/14/1861	96	1902-03	1/19/1903	3/17/1903	57
1861-62	1/5/1862	4/22/1862	107	1903-04	12/29/1903	4/24/1904	117
1862-63	1/17/1863	4/23/1863	96	1904-05	1/23/1905	4/19/1905	86
1863-64	1/3/1864	4/21/1864	109	1905-06	2/3/1906	4/14/1906	70
1864-65	1/8/1865	4/5/1865	87	1906-07	12/26/1906	4/4/1907	99
1865-66	1/7/1866	4/14/1866	97	1907-08	1/12/1908	4/8/1908	87
1866-67	1/3/1867	4/15/1867	102	1908-09	1/8/1909	4/9/1909	91
1867-68	1/6/1868	4/16/1868	101	1909-10	12/30/1909	3/28/1910	88
1868-69	12/27/1868	4/21/1869	115	1910-11	1/4/1911	4/23/1911	109
1869-70	1/8/1870	4/26/1870	108	1911-12	1/7/1912	4/19/1912	103
1870-71	1/4/1871	3/17/1871	72	1912-13	2/18/1913	3/21/1913	31
1871-72	12/21/1871	4/27/1872	128	1913-14	1/14/1914	4/19/1914	95
1872-73	12/24/1872	5/4/1873	131	1914-15	12/26/1914	4/19/1915	114
1873-74	1/26/1874	5/5/1874	99	1915-16	1/8/1916	4/17/1916	100
1874-75	12/31/1874	5/7/1875	128	1916-17	2/12/1917	4/18/1917	65
1875-76	1/13/1876	4/26/1876	104	1917-18	12/13/1917	4/14/1918	122
1876-77	12/17/1876	4/27/1877	131	1918-19	2/8/1919	3/28/1919	48
1877-78	1/29/1878	4/1/1878	62	1919-20	12/18/1919	4/17/1920	121
1878-79	1/3/1879	4/30/1879	117	1920-21	1/18/1921	3/19/1921	60
1879-80	2/3/1880	4/7/1880	64	1921-22	1/3/1922	4/11/1922	98
1880-81	12/29/1880	4/25/1881	118	1922-23	1/6/1923	4/11/1923	95
1881-82	1/5/1882	4/6/1882	91	1923-24	1/24/1924	4/17/1924	84
1882-83	1/6/1883	4/26/1883	110	1924-25	12/28/1924	3/27/1925	89
1883-84	1/6/1884	4/22/1884	107	1925-26	1/13/1926	4/23/1926	100

¹ Independent study (Biol. 395). SUNY Oneonta.

Winter of	Closed	Opened	# days closed	Winter of	Closed	Opened	# days closed
1926-27	12/19/1926	4/10/1927	112	1966-67	1/19/1967	4/9/1967	80
1927-28	1/27/1928	4/7/1928	71	1967-68	1/2/1968	4/5/1968	94
1928-29	1/15/1929	3/29/1929	73	1968-69	12/26/1968	4/15/1969	110
1929-30	1/23/1930	4/7/1930	74	1969-70	1/2/1970	4/24/1970	112
1930-31	1/14/1931	4/10/1931	86	1970-71	1/9/1971	4/30/1971	111
1931-32	2/25/1932	4/22/1932	57	1971-72	1/17/1972	4/25/1972	99
1932-33	2/25/1933	4/17/1933	51	1972-73	1/8/1973	3/18/1973	69
1933-34	12/29/1933	4/11/1934	103	1973-74			
1934-35	1/12/1935	4/13/1935	91	1974-75	1/21/1975	4/20/1975	89
1935-36	1/27/1936	3/30/1936	63	1975-76	2/29/1976		
1936-37	1/28/1937	4/20/1937	82	1976-77			
1937-38	1/10/1938	3/23/1938	72	1977-78			
1938-39	1/18/1939	4/24/1939	96	1978-79			
1939-40	12/28/1939	4/27/1940	121	1979-80		4/11/1980	
1940-41	1/7/1941	4/17/1941	100	1980-81	12/25/1980	4/13/1981	109
1941-42	1/16/1942	4/8/1942	82	1981-82	12/25/1981	4/20/1982	116
1942-43	12/20/1942	4/12/1943	113	1982-83	1/20/1983	4/1/1983	71
1943-44	12/24/1943	4/20/1944	118	1983-84	1/11/1984		
1944-45	12/28/1944	3/26/1945	88	1984-85	1/30/1985	4/5/1985	65
1945-46	1/20/1946	3/24/1946	63	1985-86	1/7/1986	3/30/1986	82
1946-47	2/8/1947	4/11/1947	62	1986-87	1/23/1987	4/4/1987	71
1947-48	1/5/1948	3/27/1948	82	1987-88	1/7/1988	4/1/1988	85
1948-49	2/6/1949	3/26/1949	48	1988-89	1/5/1989	4/1/1989	86
1949-50	2/8/1950	4/17/1950	68	1989-90	12/22/1989	3/21/1990	89
1950-51	1/28/1951	4/9/1951	71	1990-91			
1951-52	1/8/1952	4/10/1952	93	1991-92			
1952-53	2/2/1953	3/23/1953	49	1992-93		3/14/1993	
1953-54	1/14/1954	3/9/1954	54	1993-94	1/6/1994	4/20/1994	104
1954-55	1/21/1955	4/11/1955	80	1994-95	2/7/1995	3/30/1995	51
1955-56	12/23/1955	4/8/1956	107	1995-96	1/4/1996	4/15/1996	102
1956-57	1/11/1957	4/16/1957	95	1996-97	1/19/1997	4/6/1997	77
1957-58	2/1/1958	4/18/1958	76	1997-98	2/16/1998	3/31/1998	43
1958-59	12/29/1958	4/18/1959	110	1998-99	2/24/1999	4/6/1999	41
1959-60	1/12/1960	4/17/1960	96	1999-00	1/19/2000	3/25/2000	66
1960-61	1/3/1961	4/26/1961	113	2000-01	12/29/2000	4/21/2001	113
1961-62	1/18/1962	4/18/1962	90		did not		
1962-63	1/16/1963	4/17/1963	91	2001-02	freeze		0
1963-64	1/12/1964	4/15/1964	94	2002-03	1/14/2003	4/17/2003	93
1964-65	1/15/1965	4/25/1965	100	2003-04	1/10/2004	4/13/2004	94
1965-66	1/15/1966	4/19/1966	94	2004-05	1/21/2005	4/11/2005	80

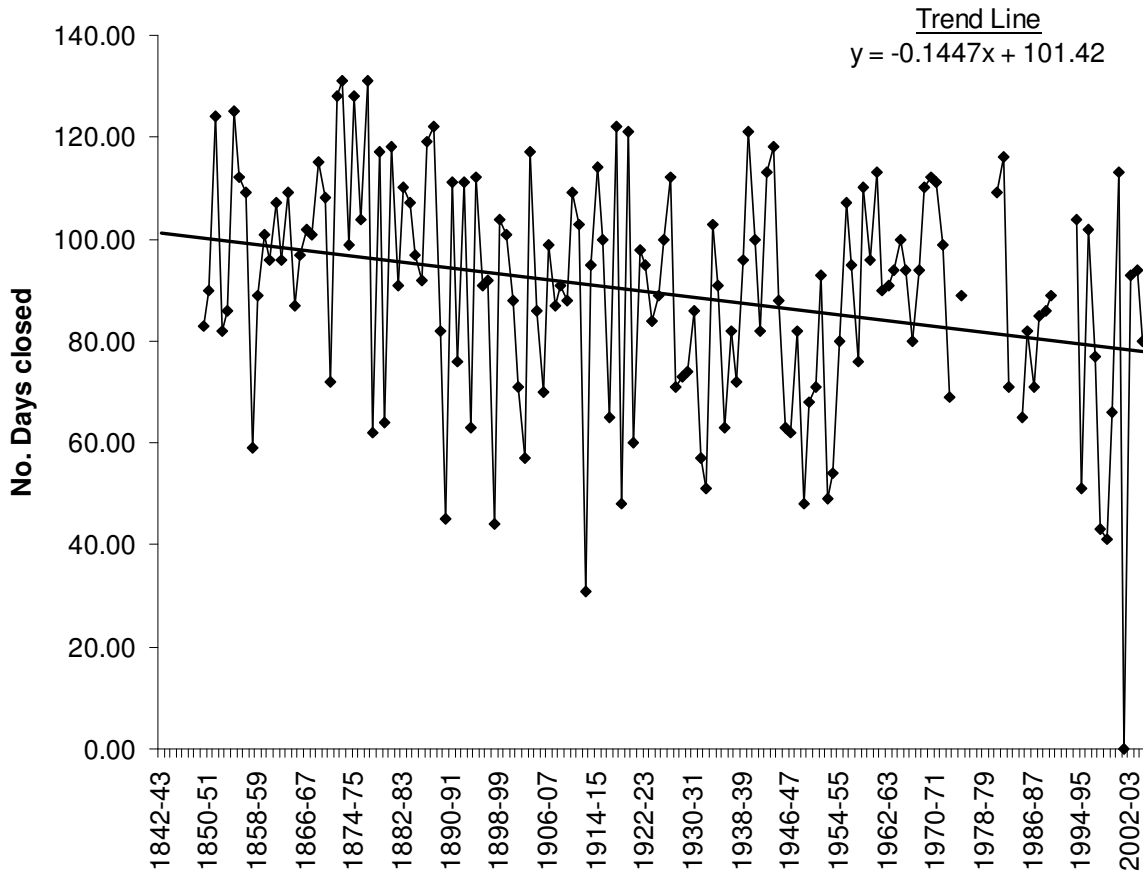


Figure 1. Summary of the number of days of ice cover, by season, for 1842/3-2004/5.

REFERENCES

- Harman, W.N., L.P. Sohacki and P.J. Godfrey. 1980. The limnology of Otsego Lake. In J.A. Bloomefield (ed.). Lakes of New York State, Vol. III. Ecology of east-central N.Y. lakes. Academic Press, In., New York.
- Harman, W.N., L.P. Sohacki, M.F. Albright and D.L. Rosen. 1997. The state of Otsego Lake, 1935-1996. 30th Occas. Pap. SUNY Oneonta Biol. Fld. Sta., SUNY Oneonta.
- Harman, W.N. Personal communication. SUNY Oneonta. Biol. Fld. Sta., SUNY Oneonta.
- Pack, A.B. and H.H. Hollis. 1973. Climatological survey. Andrews Press, Richfield Springs, Cooperstown, N.Y.